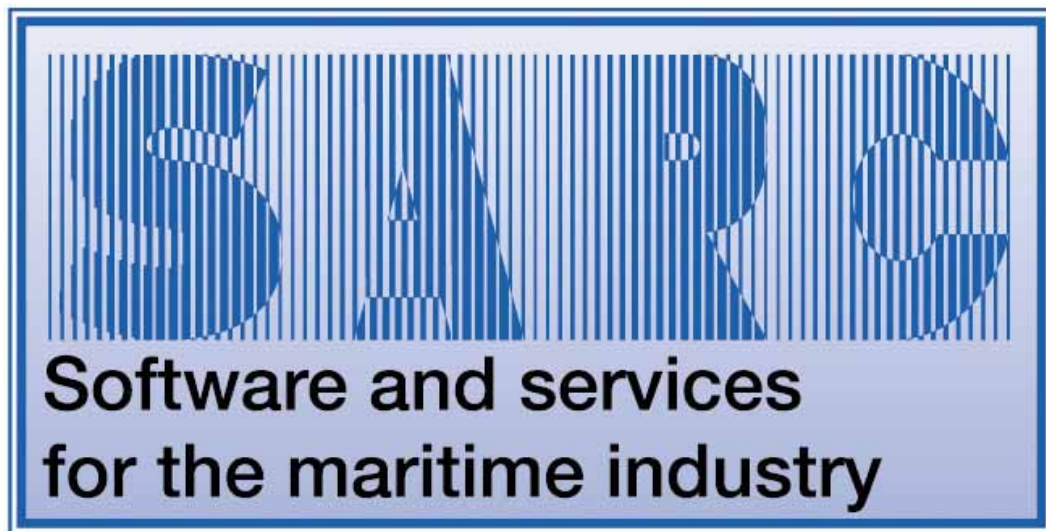


PIAS-Fairway Hullforms



SARC B.V.
Brinklaan 109 A11
1404 GA Bussum
Tel. +31 35 691 50 24
Fax +31 35 691 83 03
www.sarc.nl
sarc@sarc.nl

PIAS-Fairway Hull forms

The hullforms in this booklet have been supplied by third parties and are available for use with the Fairway program of SARC B.V.

SARC cannot take responsibility for these hull forms.

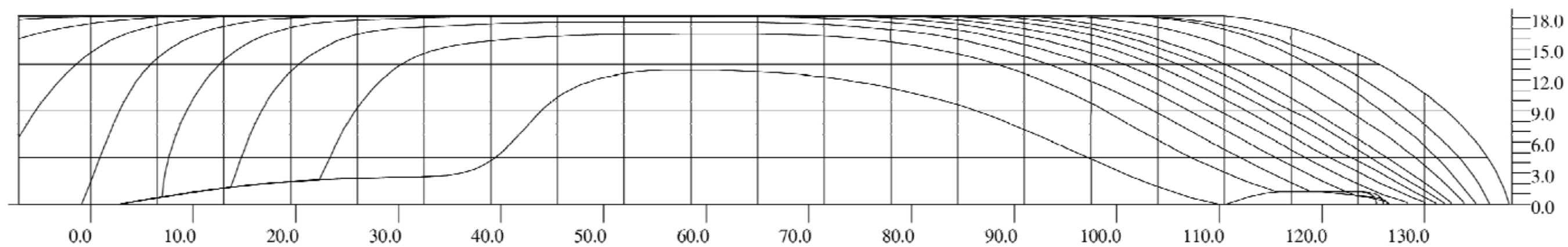
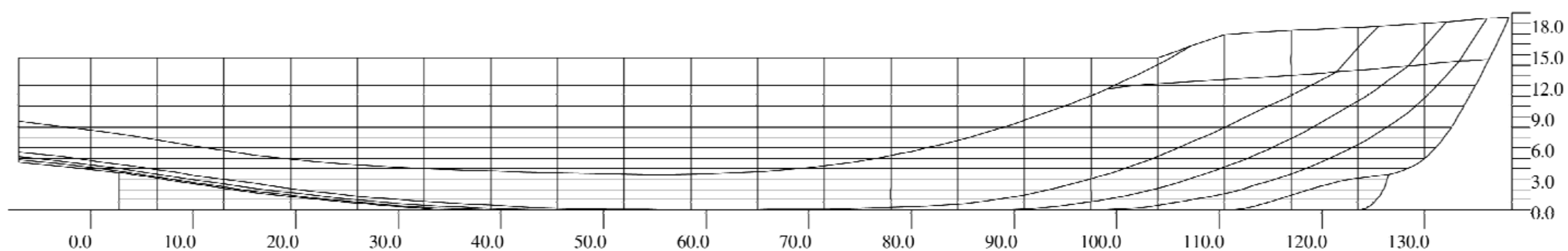
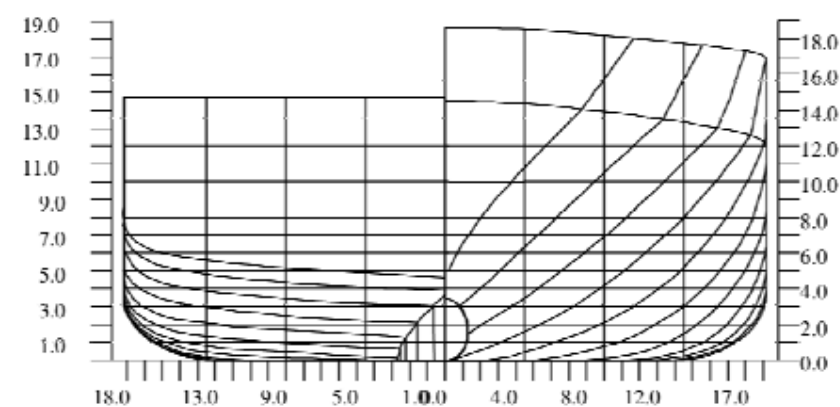
Description and data of the hull form

Name	Name of the hull form
STD	Hull form complies to the SARC Standard!
L*B*T	Length, Breadth and Draft of the ship
SOURCE	Source of the hull form

Name	STD	L*B*T	SOURCE
Barge Carrier	no	130.0*37.7*5.0	publ. ir. E.Vossnack
Binnen-/Buitenvaarder	no	95.0*16.0*5.0	Full Forms, Shallow Draft, Barge Feeder Vessel, G.F. Bertaglia, G. Sbrizzai, P.Frandoli
Clarence	no	202.0*32.2*10.6	publ. ir. E.Vossnack
Container	no	263.0*37.1*12.5	Proceedings of the fifth IMDC
Duisburg Test Case	yes	355.0*51.0*14.5	STR August 2012, Vol. 59/No. 3
Frigate GOA 2013	yes	96.0*11.5*3.3	Design SARC
Holland Amerika Lijn	no	233.0*30.6*7.3	publ. ir. E.Vossnack
Happy Buccaneer	no	134.0*28.0*7.0	Schiff & Hafen 1984, vol.36 no.9
Jacht	yes	23.5*6.3*4.0	Unknown
Koningin Beatrix	yes	146.4*27.6*6.1	reconstructed for S&W, Nr. 53, year nr. 11
Kotter	no	21.1*6.5*1.8	publ. ir. E.Vossnack
Kustwacht, m-p	no	73.2*18.0*5.0	Schiff & Hafen, 12/'98
Lelievlet	yes	5.7*1.8*0.4	Scouting Nederland
D.S.S. Rotterdam	no	198.1*28.7*9.0	PRADS '98
Rotortug	no	28.6*12.0*3.8	SWZ 6/'99
Sleper	no	35.0*10.1*4.5	Ship & Boat, jan/feb '97
Vortigern	no	107.9*18.6*4.1	Shipping World & Shipbuilder 12 /'69
Walrus	yes	67.6*8.4*6.0	Unknown
Winter	no	157.7*25.7*7.6	WEGEMT
Zirfaea	no	60.0*11.5*3.8	SWZ 9/'93

Name and location of the files

NAME	LOCATION	FILENAME
Barge Carrier	\Hull\BARGE\	BARGE
Binnen-/Buitenvaarder	\Hull\BIBU\	BIBU
Clarence	\Hull\CLARENCE\	CLARENCE
Container	\Hull\CONTAIN\	CONTAIN
Duisburg Test Case	\Hull\DTC\	DTC
Frigate GOA 2013	\Hull\GOA2013	GOA2013
Holland Amerika Lijn	\Hull\HAL\	HAL
Happy Buccaneer	\Hull\H-BUCAN\	H-BUCAN
Jacht	\Hull\YACHT\	YACHT
Koningin Beatrix	\Hull\KONBEA	KONBEA
Kotter	\Hull\KOTTER\	KOTTER
Kustwacht, m-p	\Hull\KUSTWACH\	KUSTWACH
Lelievlet	\Hull\LELIE\	LELIEPRO
D.S.S. Rotterdam	\Hull\R-DAM\	R-DAM
Rotortug	\Hull\ROTORTUG\	ROTORTUG
Sleper	\Hull\SLEPER\	SLEPER
Vortigern	\Hull\VORTIGRN\	VORTIGRN
Walrus	\Hull\WALRUS\	WALRUS
Winter	\Hull\WINTER\	WINTER
Zirfaea	\Hull\ZIRFAEA\	ZIRFAEA



$L_{pp} = 130.000 \text{ m}$
 $B_{mld} = 37.700 \text{ m}$
 $T_{mld} = 5.000 \text{ m}$

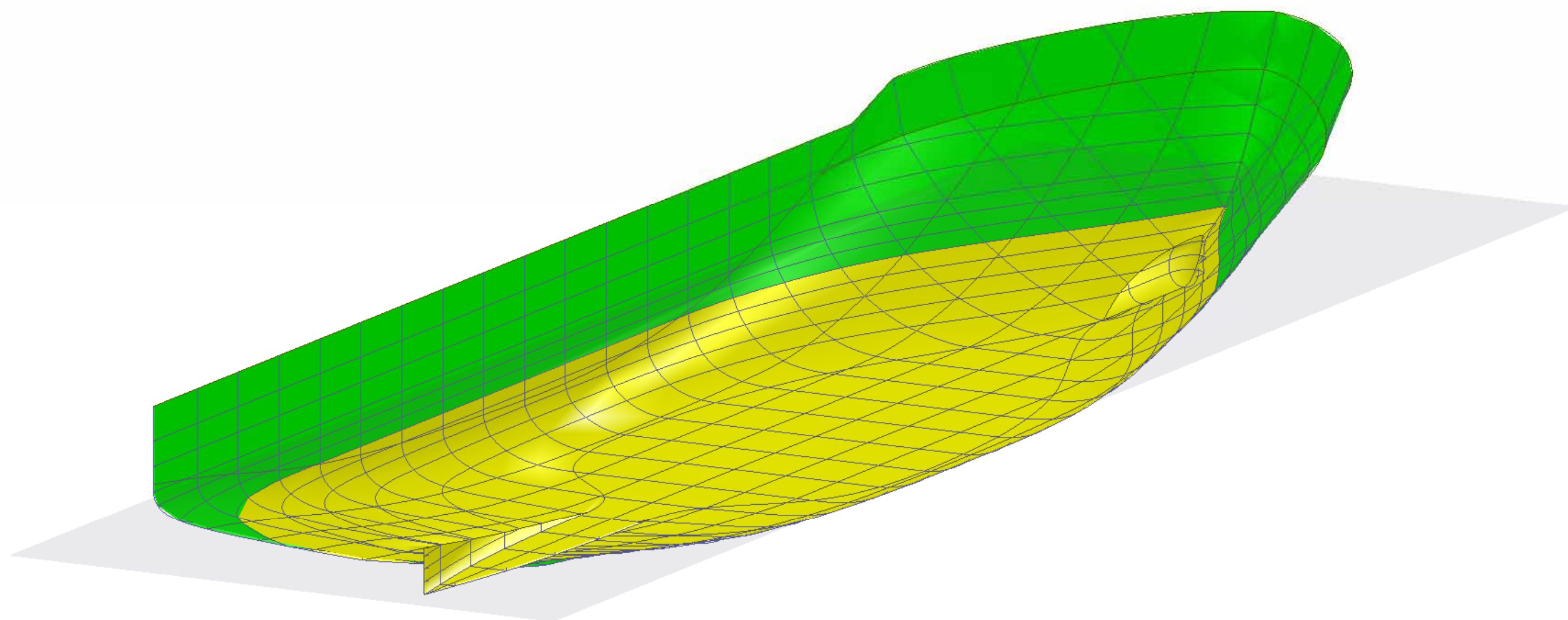
$C_b = 0.639$
 $C_m = 0.920$
 $C_p = 0.695$

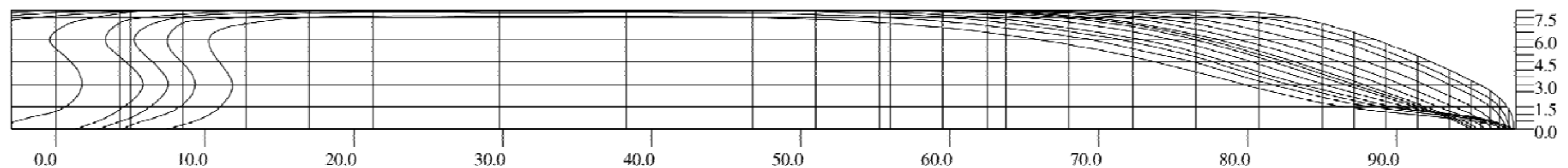
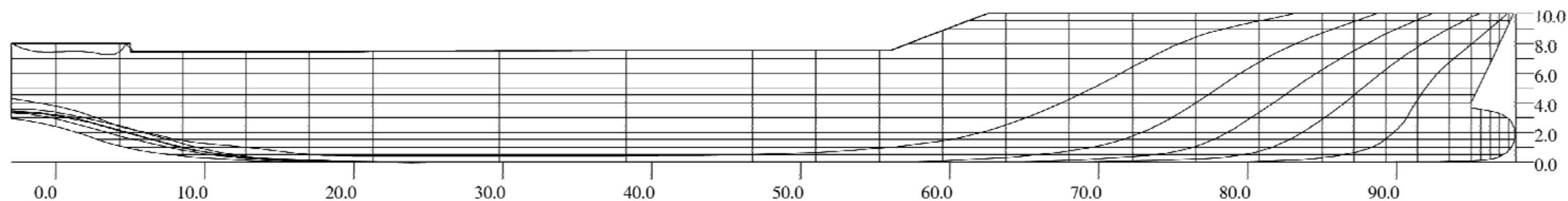
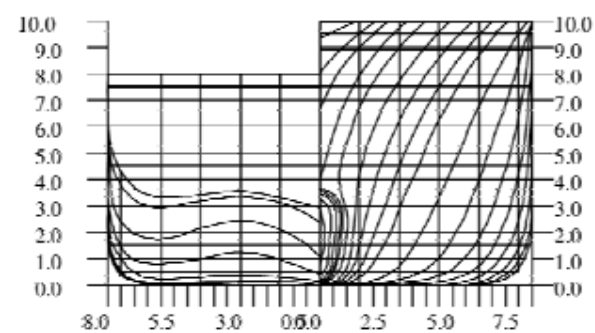
$\text{Volume} = 15655 \text{ m}^3$
 $\text{LCB} = -4.33 \%$
 $\text{KM} = 25.72 \text{ m}$

SARC BV
 Bussum, Holland
 tel. 31 35 6915074

1/600

20 apr 2013



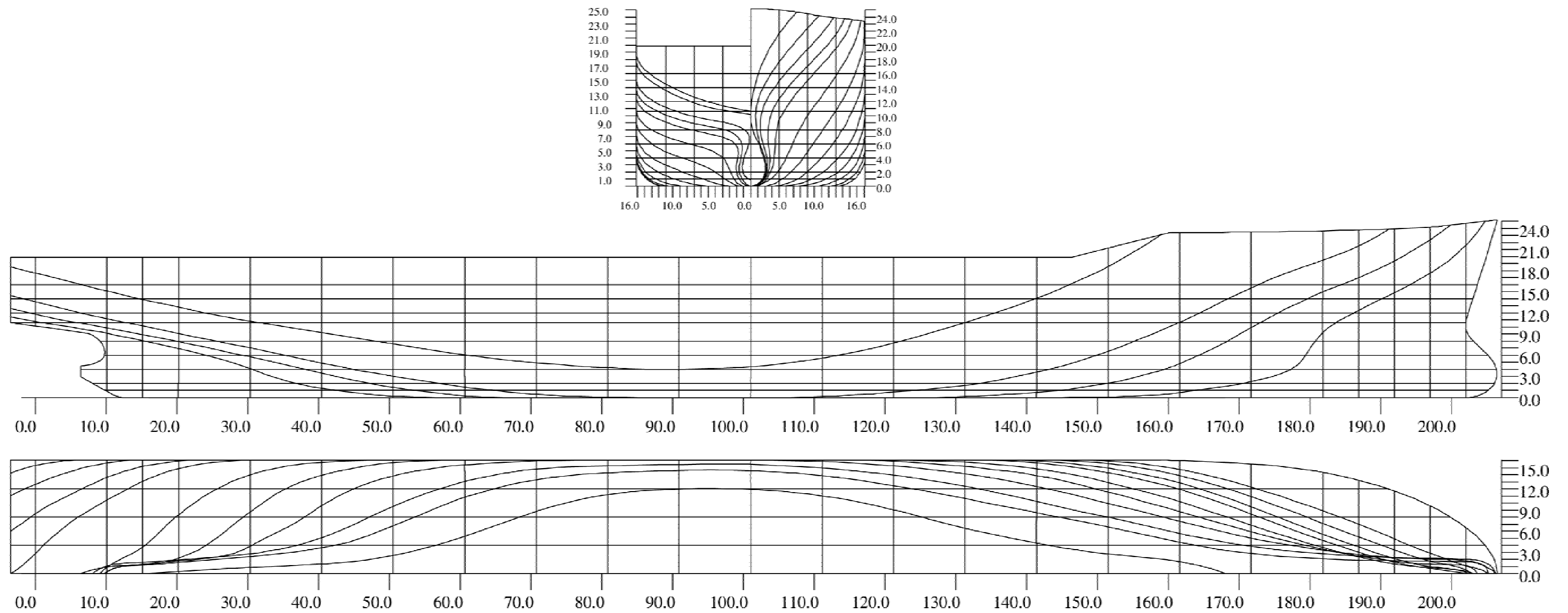


$L_{pp} = 95.000 \text{ m}$
 $B_{mld} = 16.000 \text{ m}$
 $T_{mld} = 5.000 \text{ m}$

$C_b = 0.809$
 $C_m = 0.987$
 $C_p = 0.820$

$\text{Volume} = 6150 \text{ m}^3$
 $\text{LCB} = -6.37 \%$
 $\text{KM} = 4.39 \text{ m}$

binnen/buitenvaarder
 SARC BV
 Bussum, Holland
 tel. 31 35 6945024

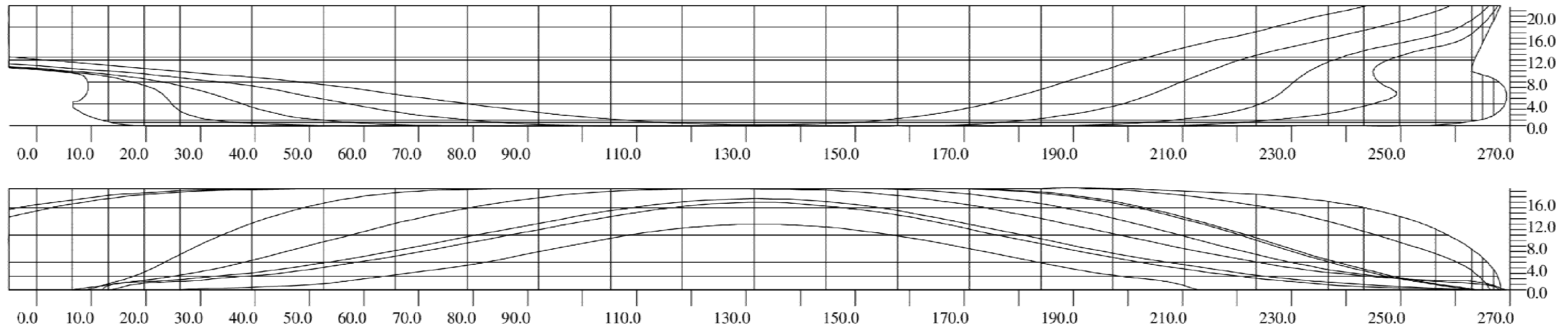
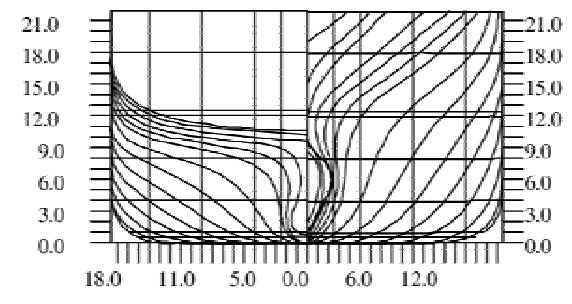


Lpp =202.000 m
 Bmld = 32.240 m
 Tmld = 10.600 m

Cb =0.633
 Cm =0.979
 Cp =0.647

Volume = 43707 m³
 LCB = -1.59 %
 KM = 9.21 m

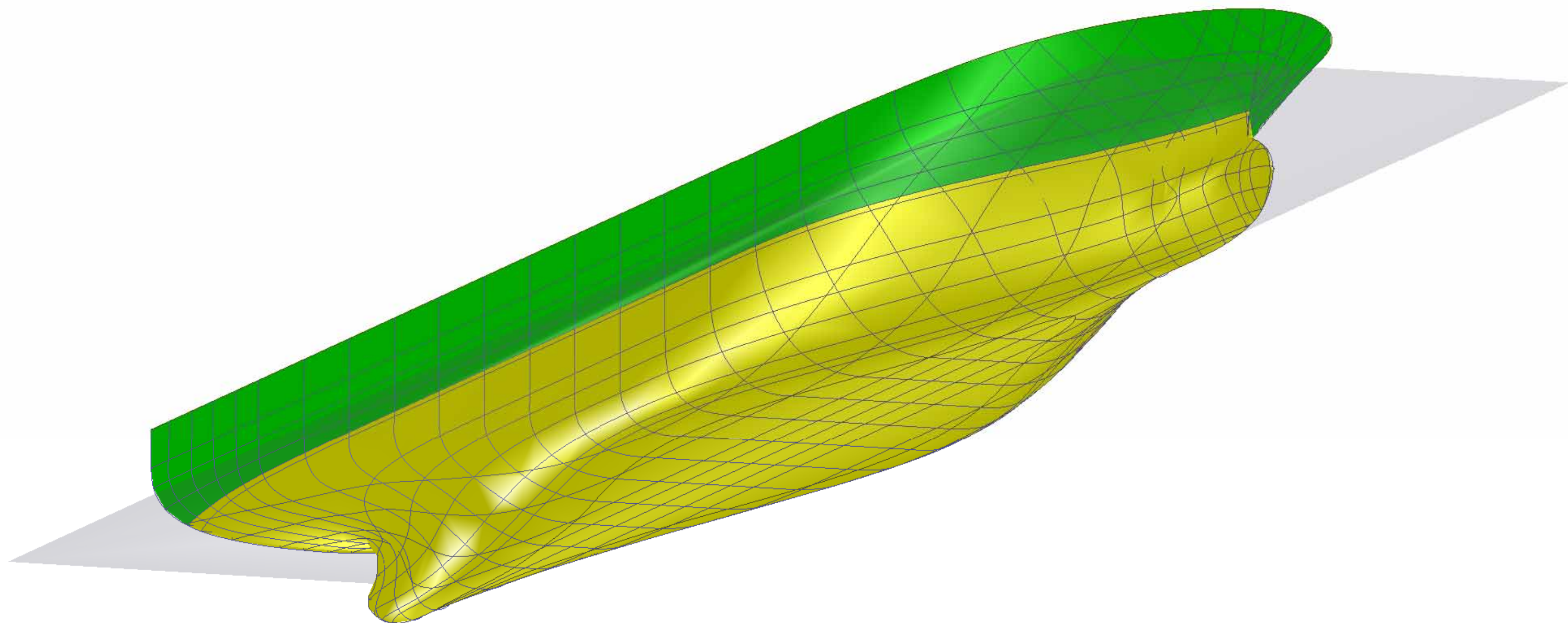
Clarence
 SARC BV
 Bussum, Holland
 tel. 31 35 6915024

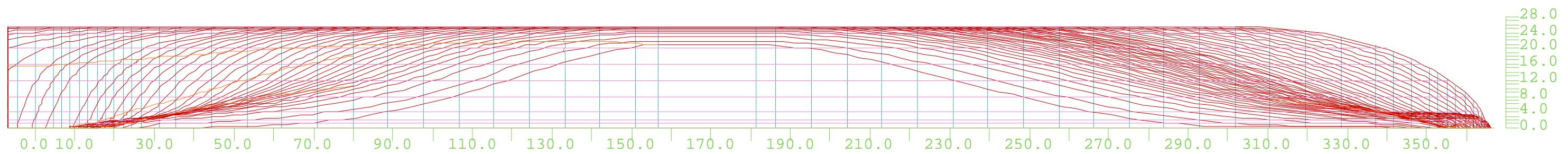
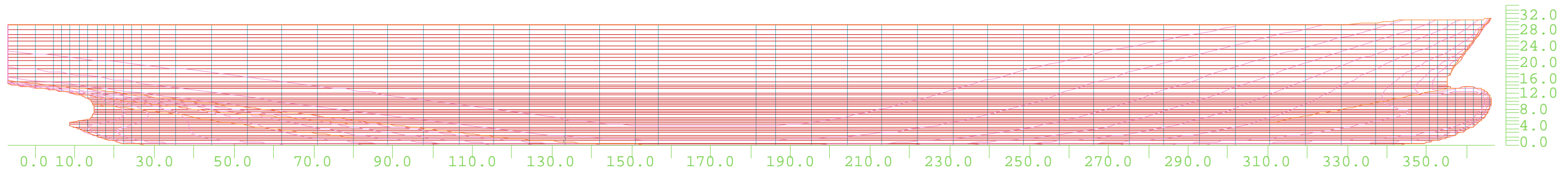
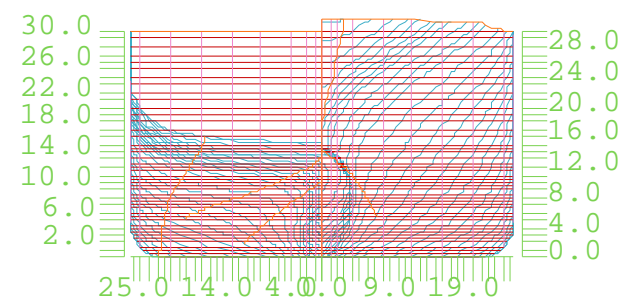


Lpp =263.000 m
Bmld = 37.100 m
Tmld = 12.500 m

Cb =0.630
Cm =0.978
Cp =0.644

Volume = 76873 m^3
LCB = -2.89 %
KM = 11.18 m



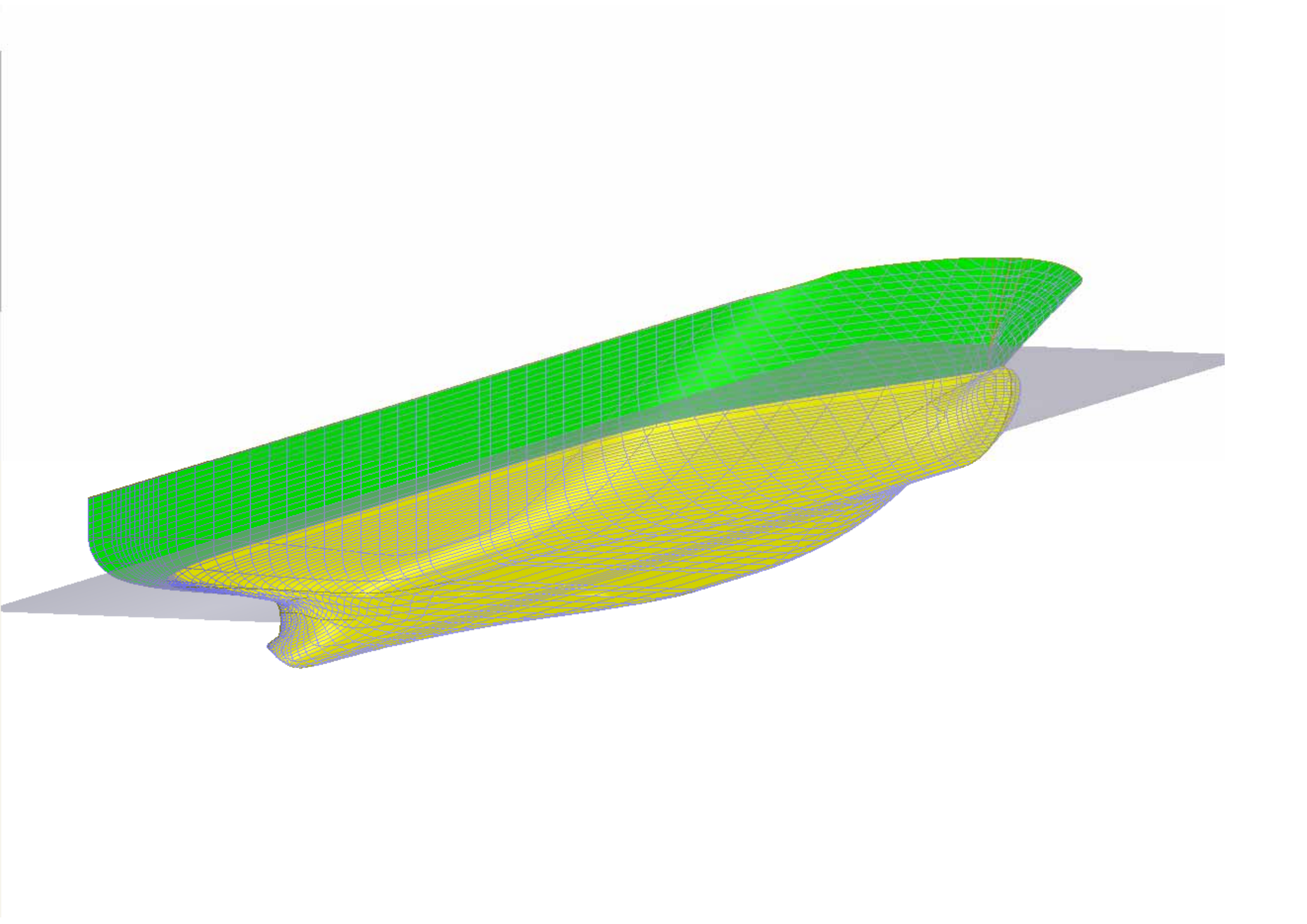


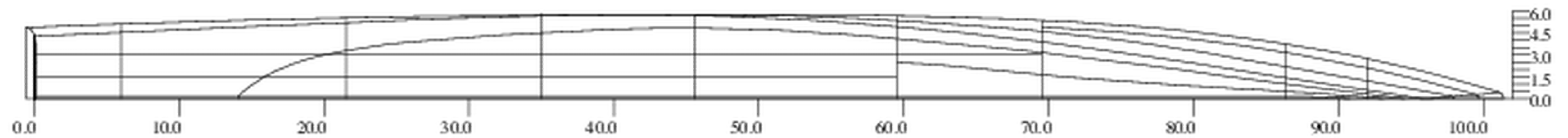
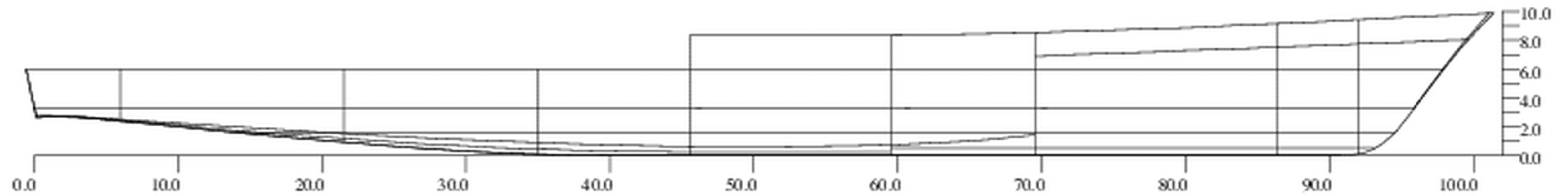
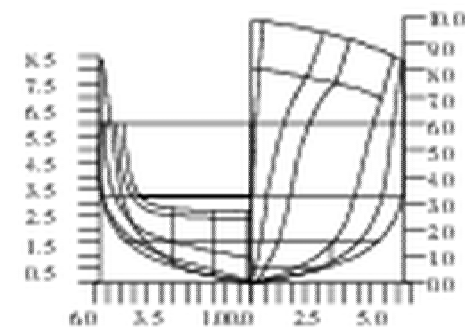
Lpp = 355.000 m
 Bmld = 51.000 m
 Tmld = 14.500 m

Cb = 0.661
 Cm = 0.988
 Cp = 0.669

Volume = 173517 m³
 LCB = -0.97 %
 KM = 16.94 m

Duisburg Test Case		
SARC BV		
Bussum, Holland		
tel. 31 35 6915024		
	1/1600	3 mar 2014

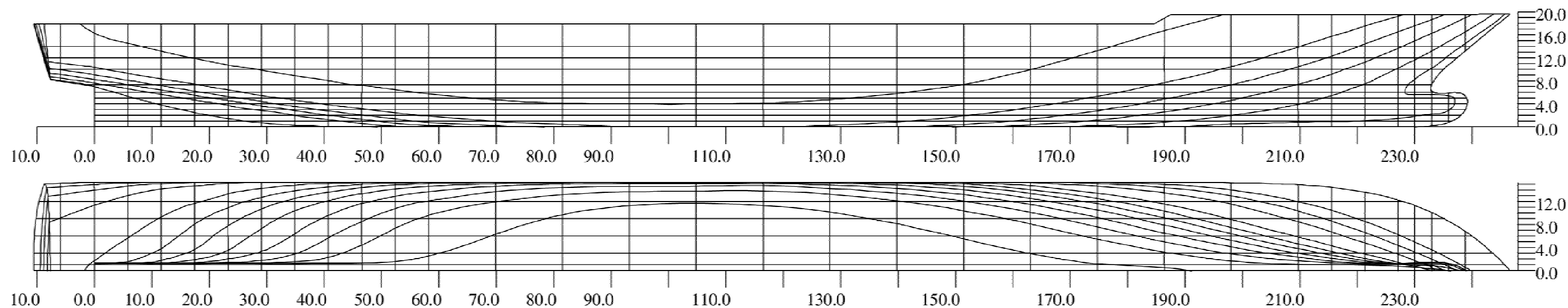
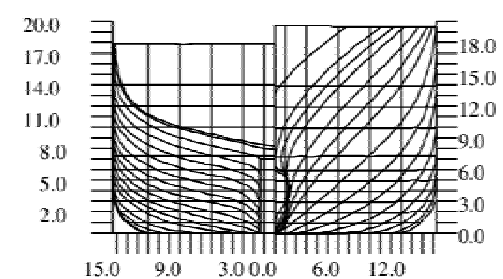




$L_{pp} = 95.000 \text{ m}$
 $B_{mid} = 56.000 \text{ m}$
 $T_{mid} = 3.250 \text{ m}$

$C_b = 0.093$
 $C_m = 0.153$
 $C_p = 0.608$

$\text{Volume} = 161.2 \text{ m}^3$
 $L_{CB} = -1.46 \%$
 $KM = 4.14 \text{ m}$



Lpp =233.000 m
Bmld = 30.600 m
Tmld = 7.300 m

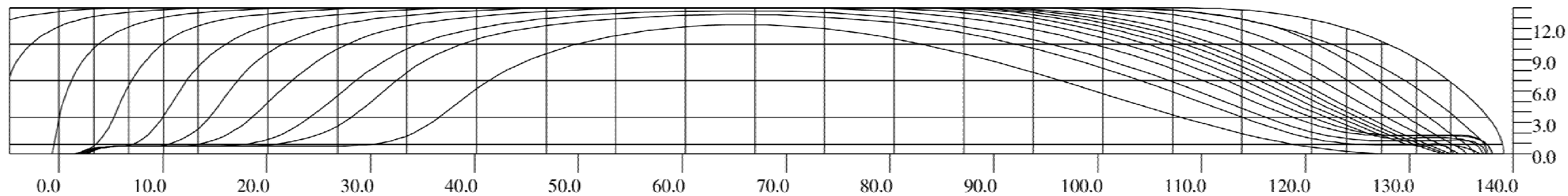
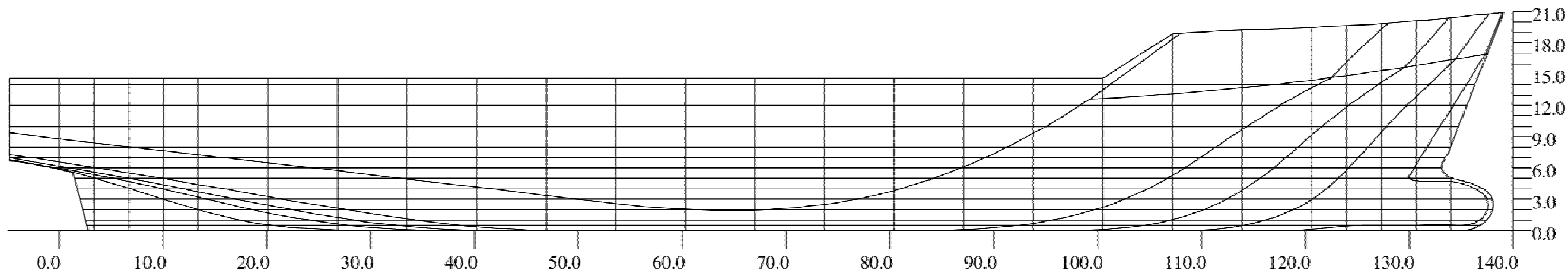
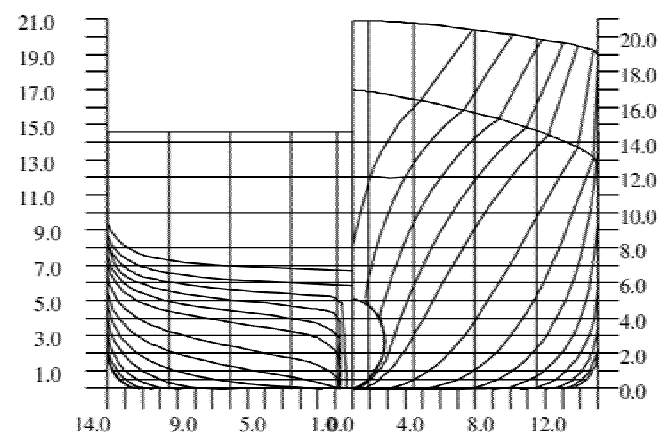
Cb =0.635
Cm =0.970
Cp =0.655

Volume = 33051 m³
LCB = -2.92 %
KM = 11.86 m

SARC BV
Bussum, Holland
tel. 31 35 6915024

1/1000

08 feb 2013



Lpp =134.000 m
Bmld = 28.000 m
Tmld = 7.000 m

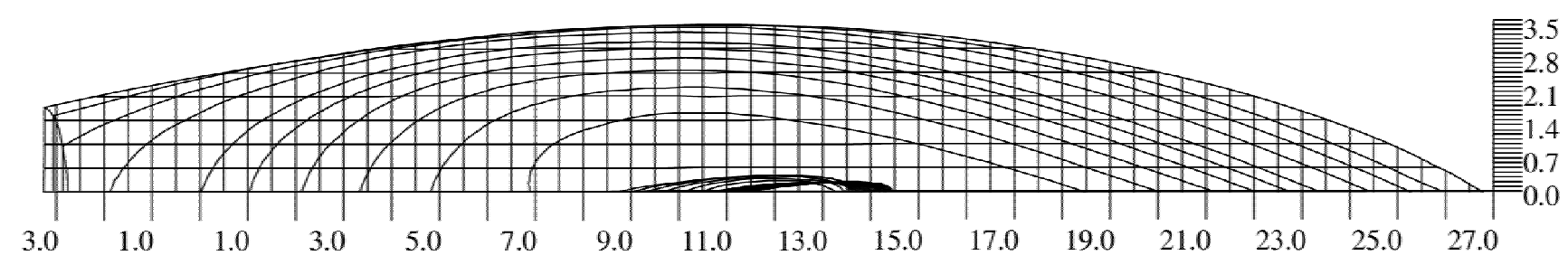
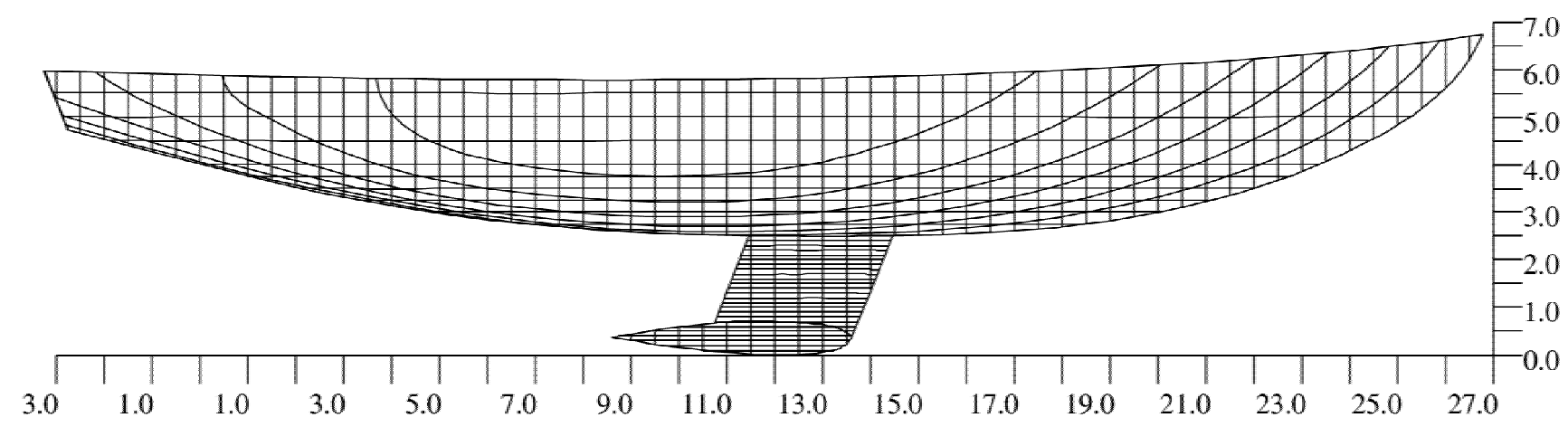
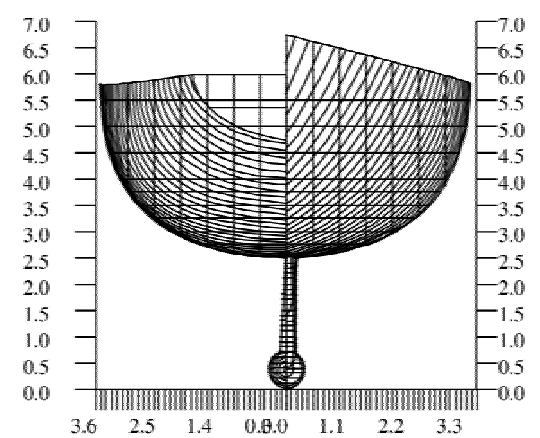
Cb =0.710
Cm =0.992
Cp =0.716

Volume = 18651 m³
LCB = -2.26 %
KM = 10.62 m

Happy Buccaneer
SARC BV
Bussum, Holland
tel. 31 35 6915024

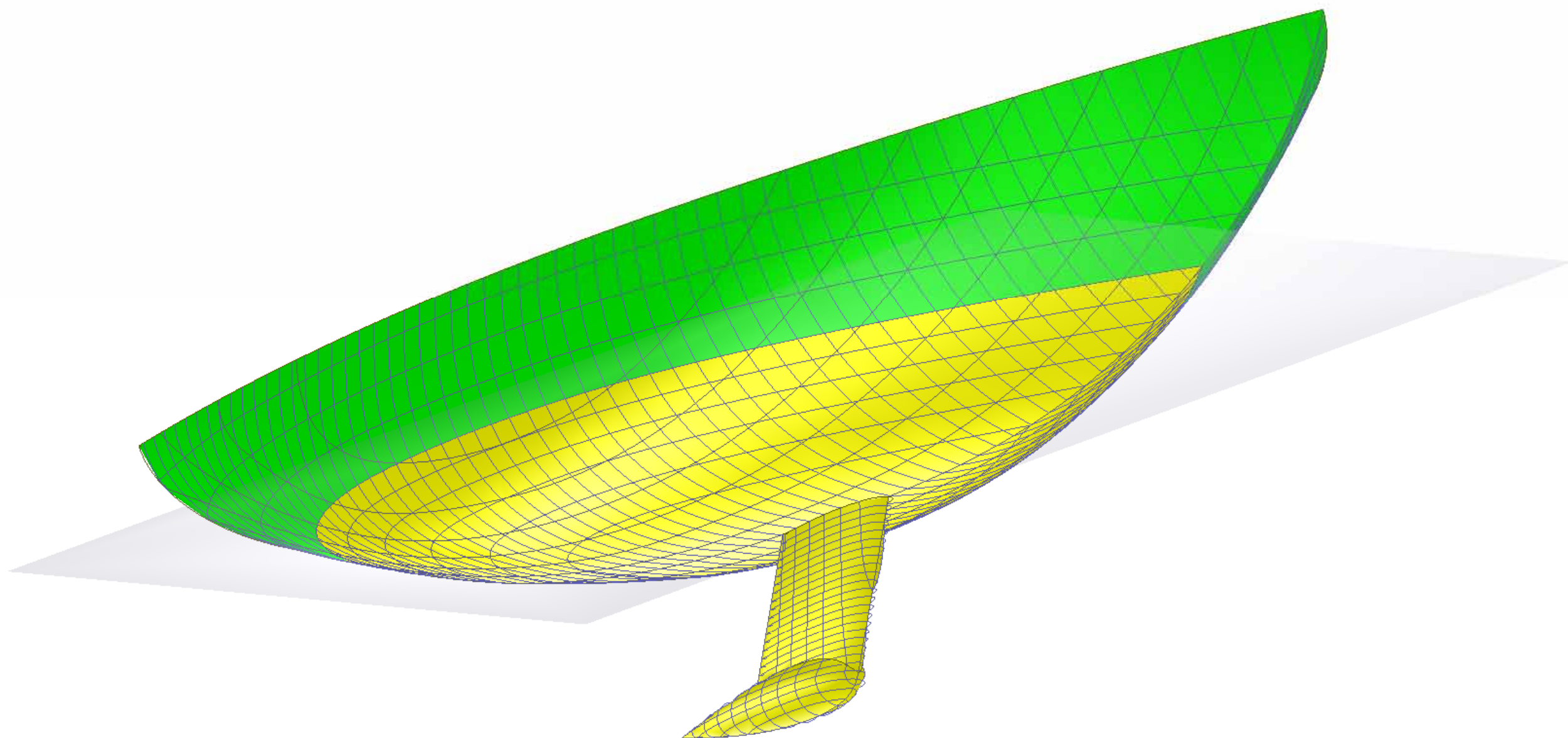
1/600

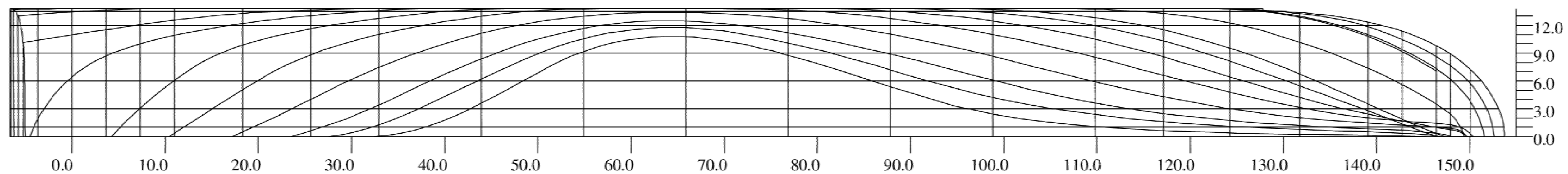
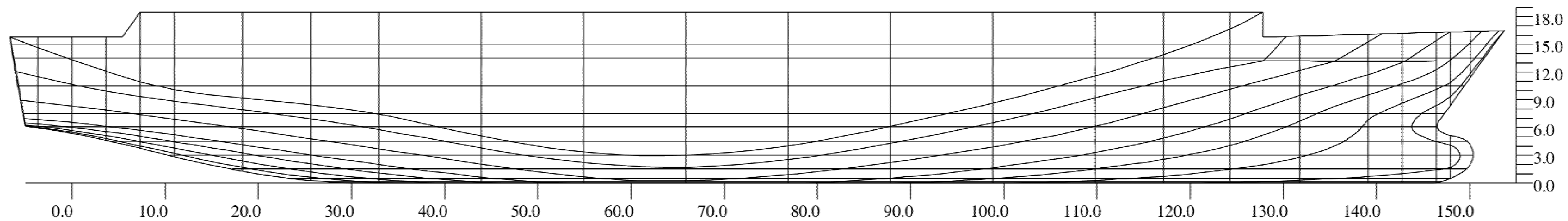
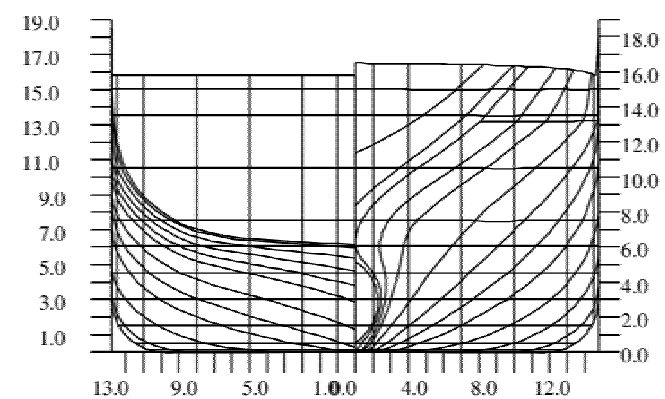
18 feb 2013



Lpp = 23.500 m
Bmld = 6.250 m
Tmld = 4.000 m

Cb = 0.157
Cm = 0.305
Cp = 0.515
Volume = 92 m³
LCB = -3.16 %
KM = 2.68 m

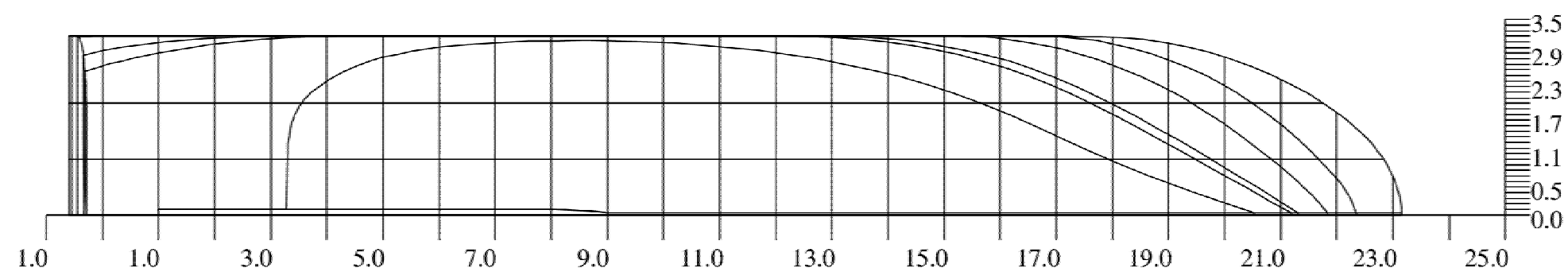
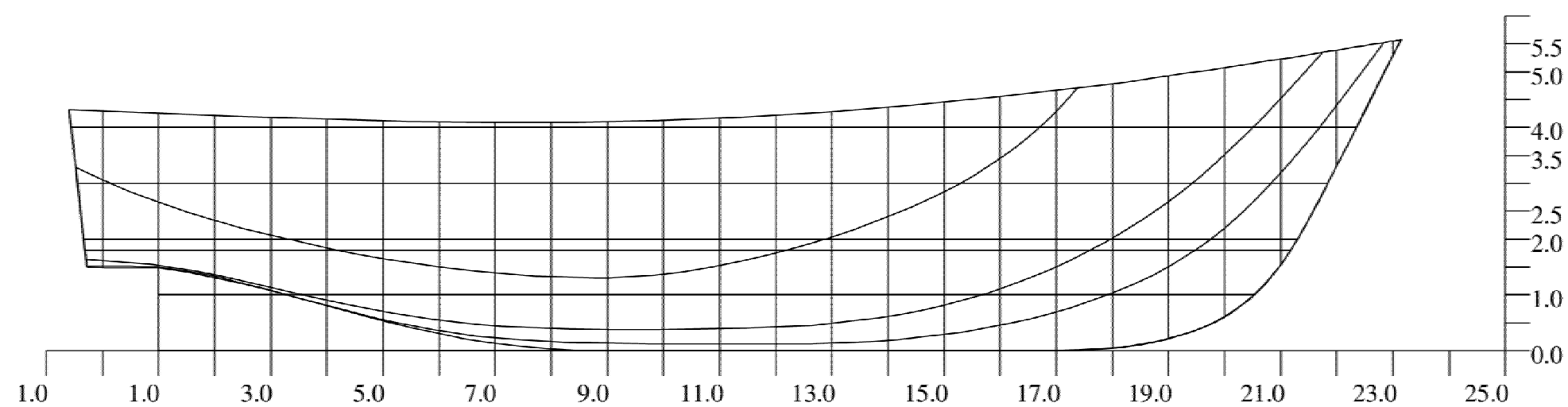
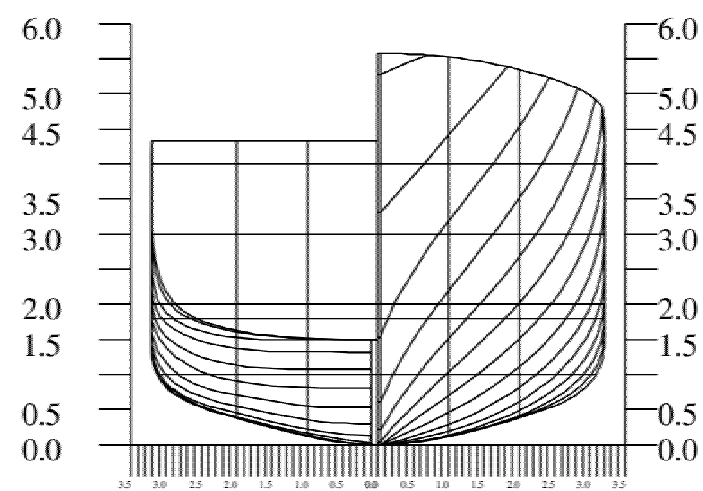




Lpp =146.400 m
Bmld = 27.600 m
Tmld = 6.090 m

Cb =0.612
Cm =0.977
Cp =0.626

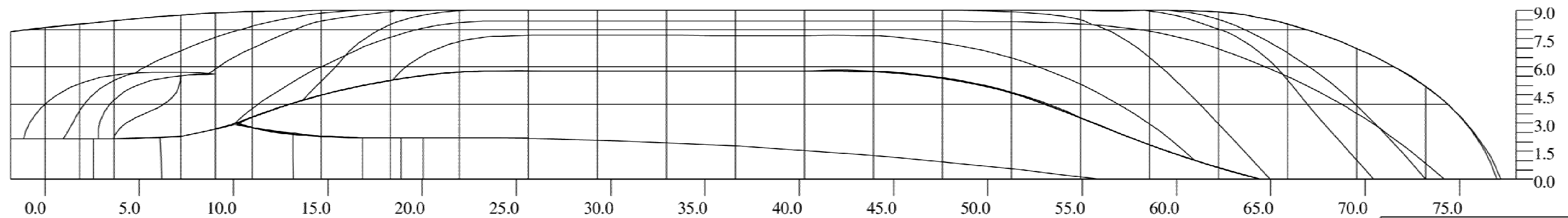
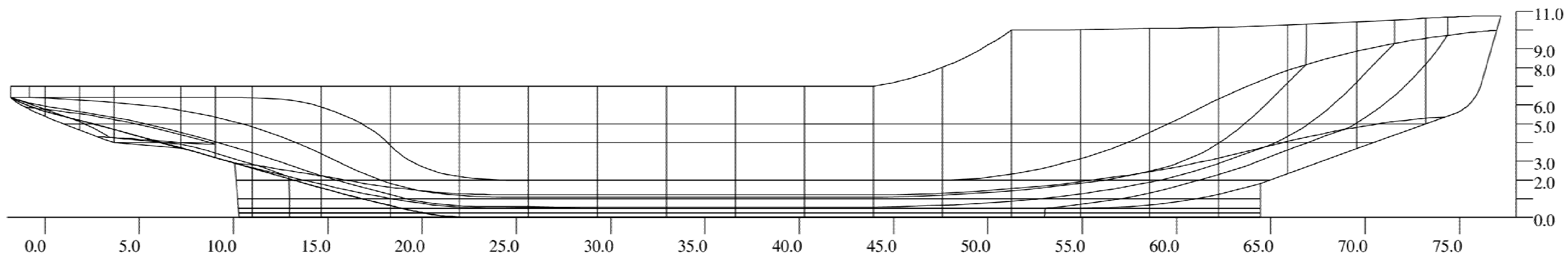
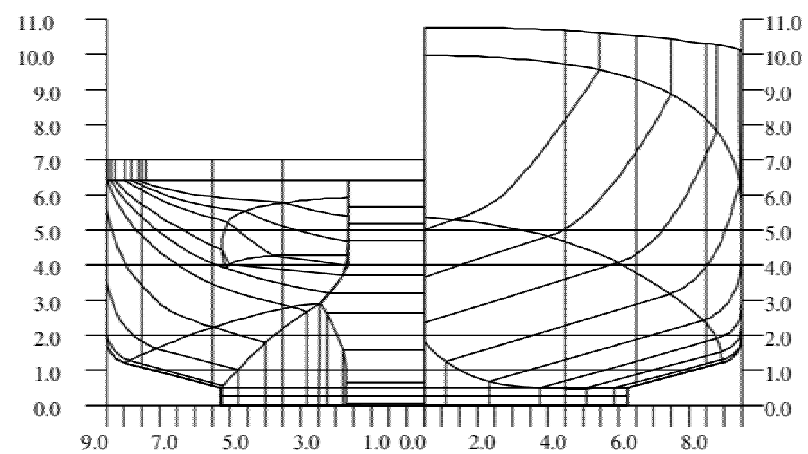
Volume = 15057 m³
LCB = -1.92 %
KM = 11.83 m



Lpp = 21.150 m
Bmld = 6.400 m
Tmld = 1.800 m

Cb =0.515
Cm =0.818
Cp =0.630

Volume = 126 m³
LCB = -2.68 %
KM = 2.77 m

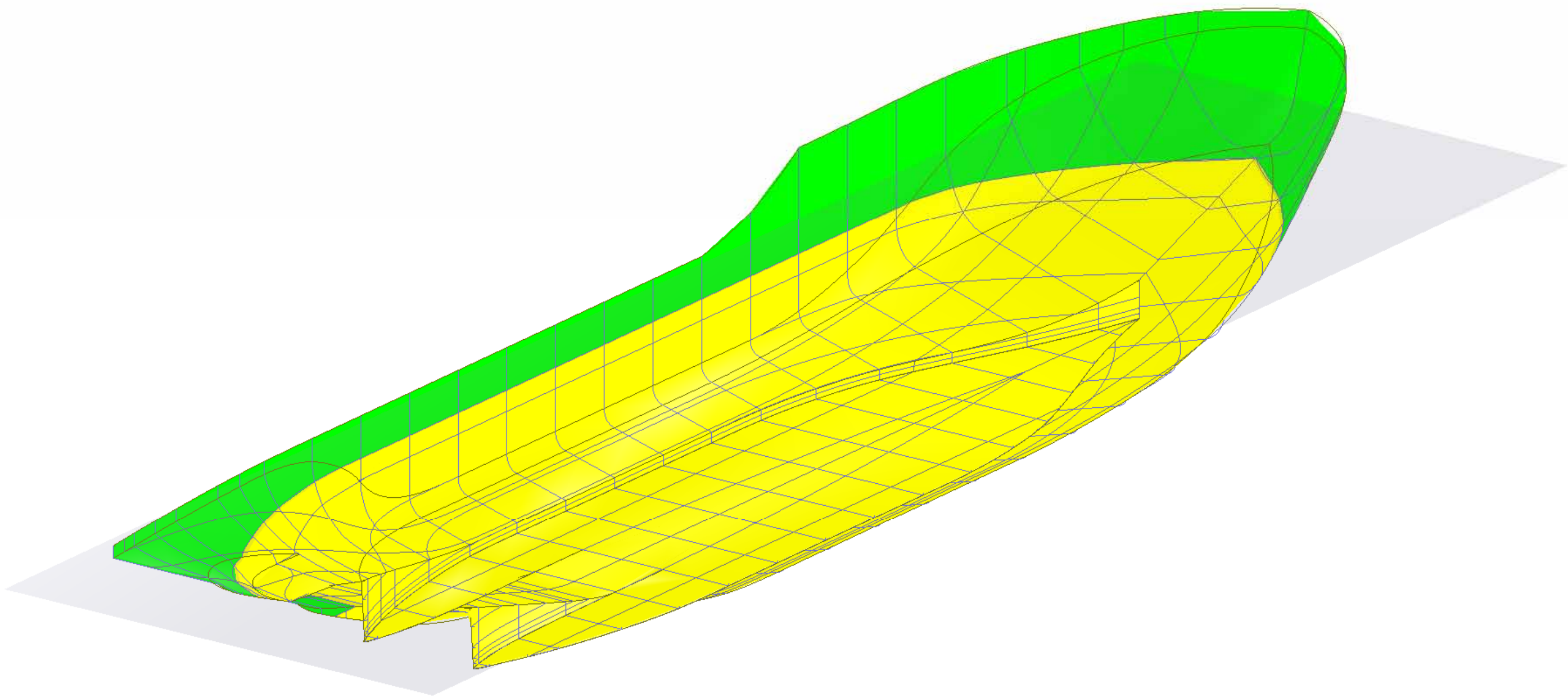


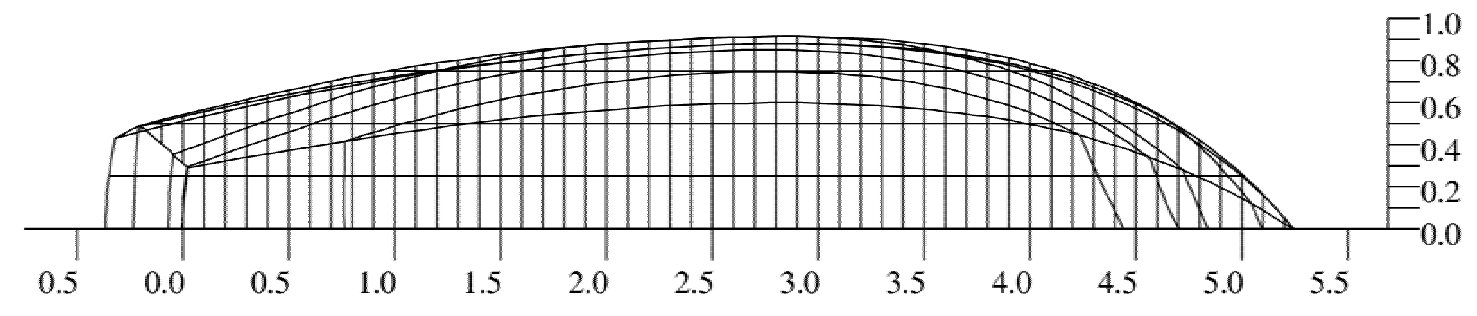
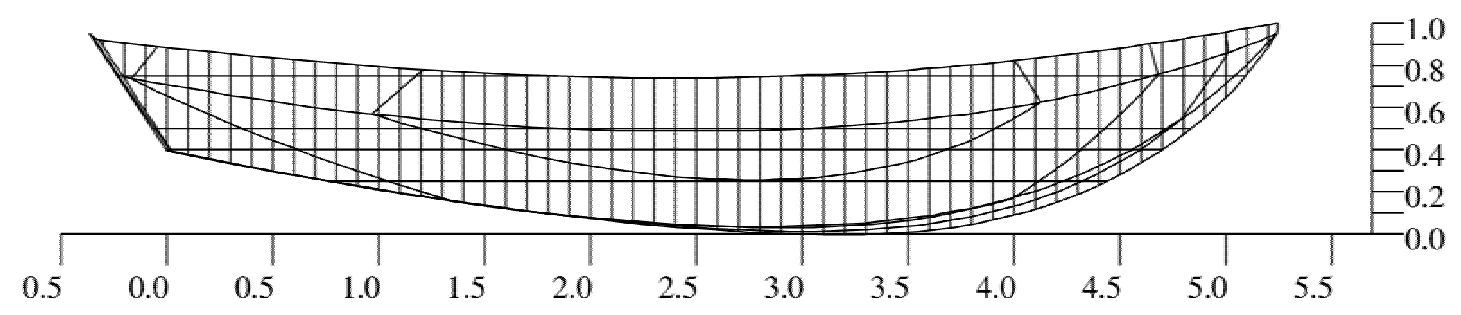
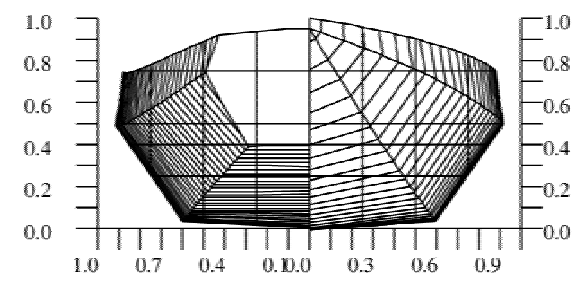
Lpp = 73.200 m
Bmld = 18.000 m
Tmld = 5.000 m

Cb = 0.637
Cm = 0.933
Cp = 0.683

Volume = 4197 m³
LCB = 0.76 %
KM = 7.08 m

Kustwacht, multi-purpose
SARC BV
Bussum, Holland
tel. 31 35 6915024

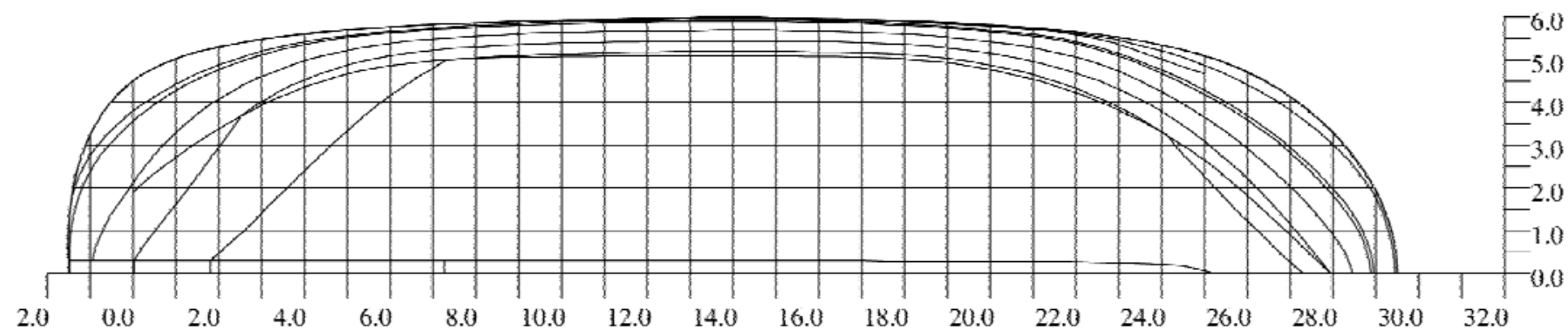
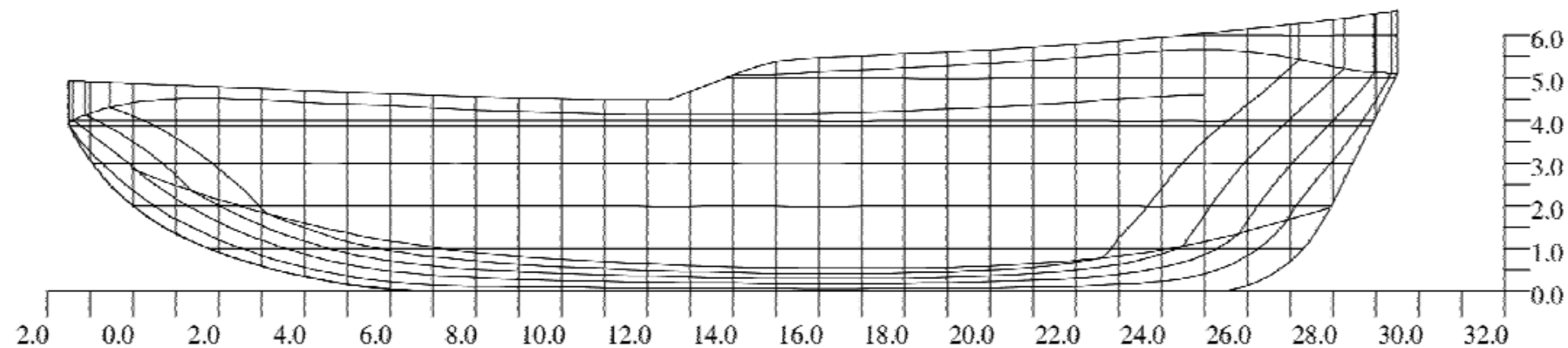
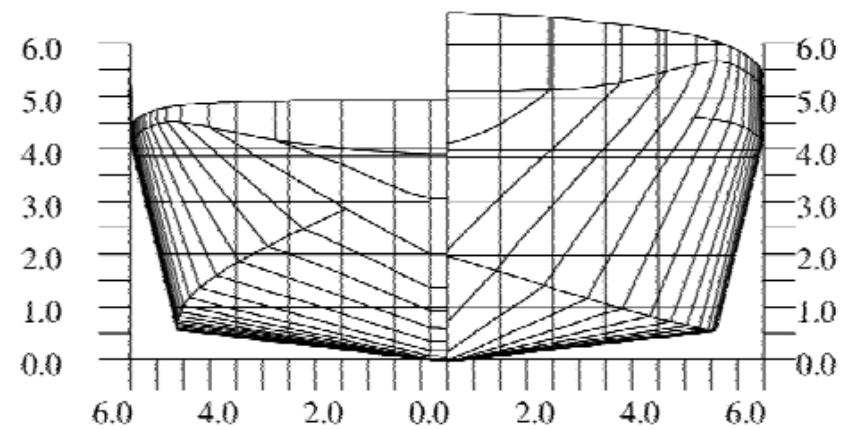




Lpp = 5.690 m
Bmld = 1.800 m
Tmld = 0.400 m

Cb =0.365
Cm =0.761
Cp =0.480

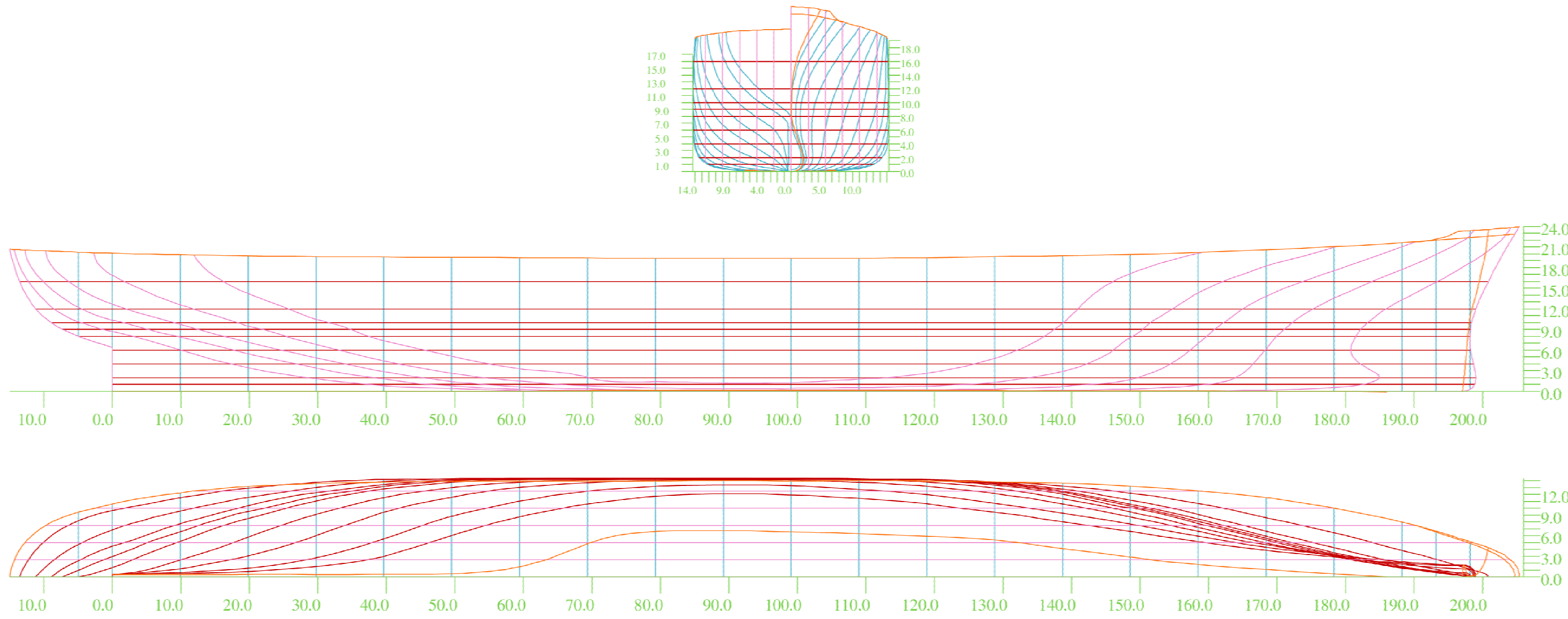
Volume = 1 m^3
LCB = -4.48 %
KM = 0.79 m



$L_{pp} = 28.650 \text{ m}$
 $B_{mld} = 12.000 \text{ m}$
 $T_{mld} = 3.860 \text{ m}$

$C_b = 0.654$
 $C_m = 0.850$
 $C_p = 0.770$

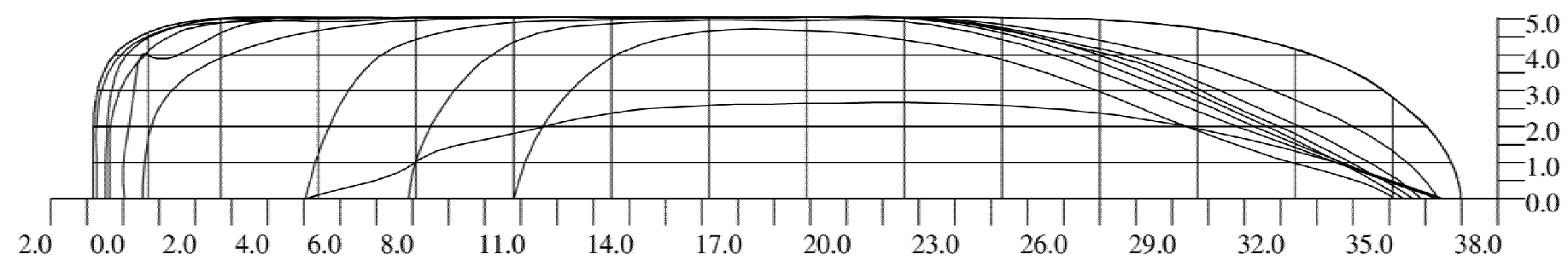
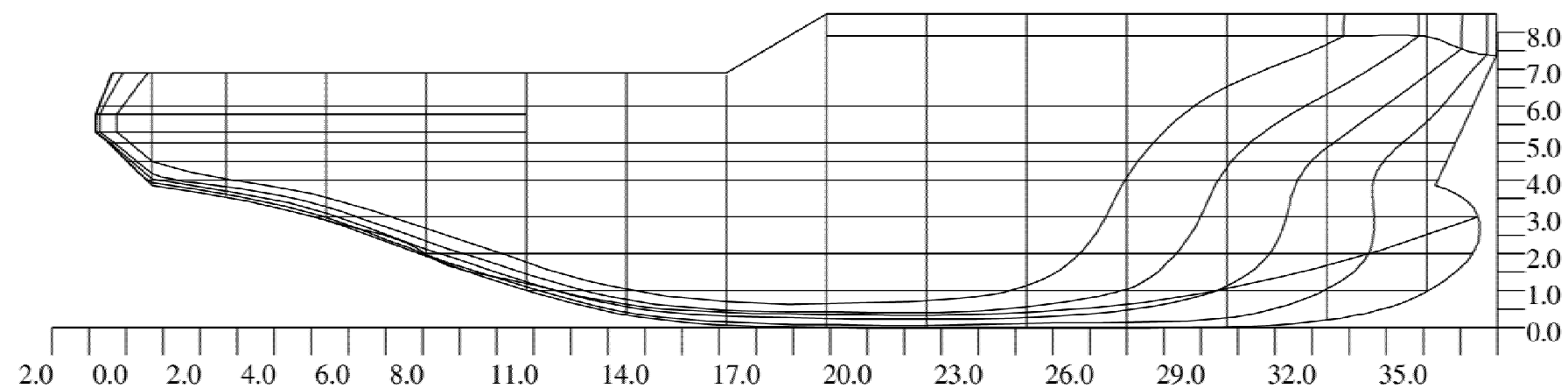
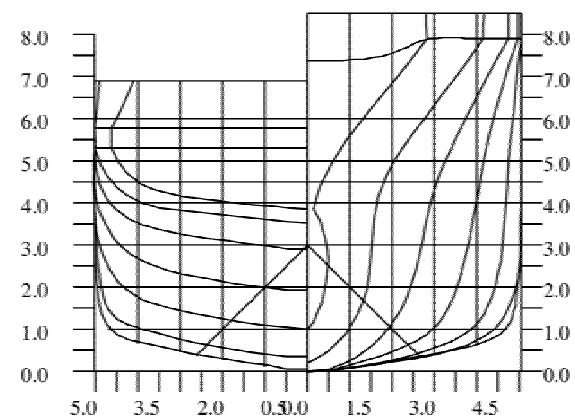
Volume = 868 m^3
 $LCB = -1.97 \%$
 $KM = 3.37 \text{ m}$



Lpp =198.120 m
Bmld = 28.650 m
Tmld = 9.000 m

Cb =0.599
Cm =0.942
Cp =0.636

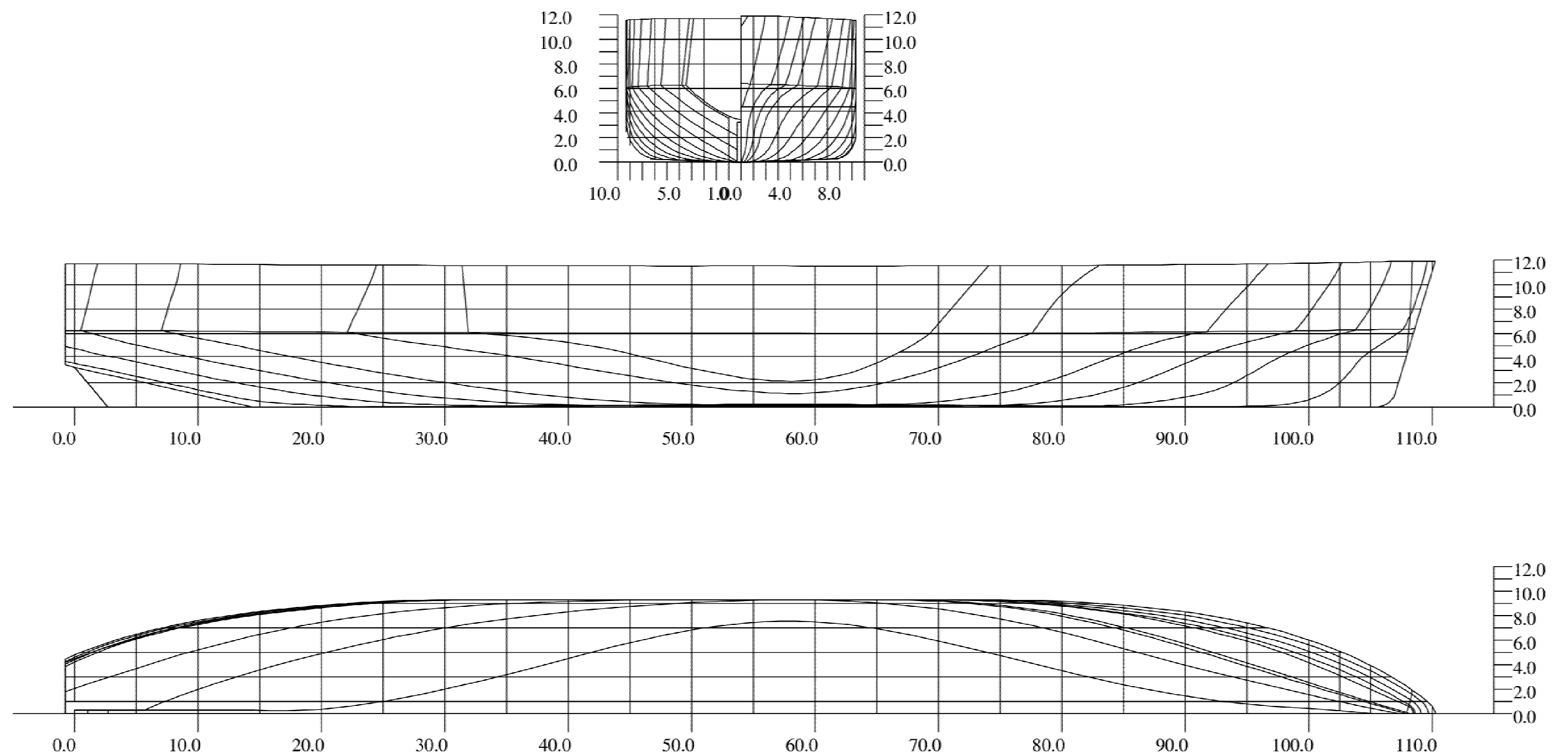
Volume = 30600 m^3
LCB = -1.94 %
KM = 7.43 m



Lpp = 35.000 m
 Bmld = 10.080 m
 Tmld = 4.500 m

Cb =0.565
 Cm =0.908
 Cp =0.622

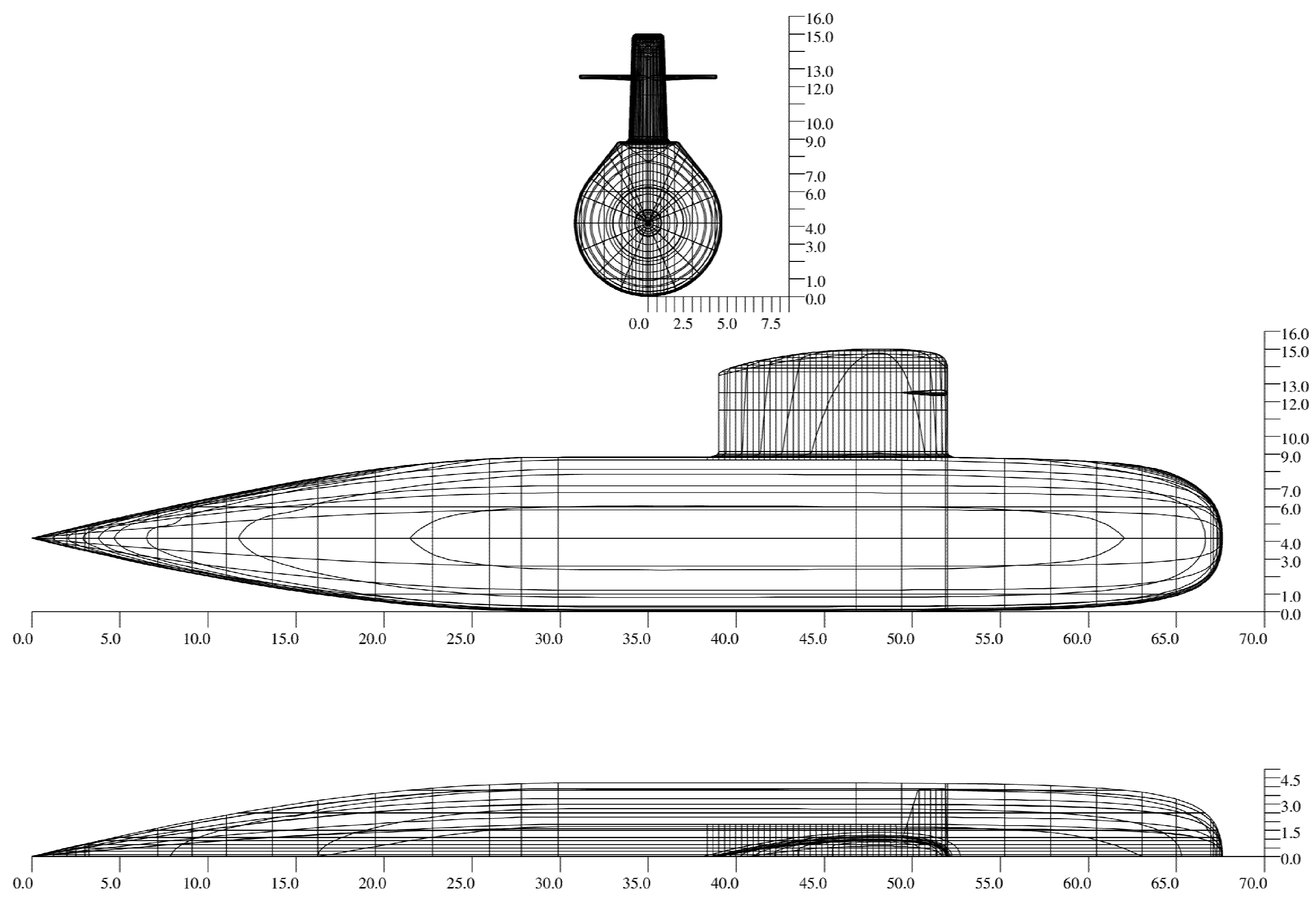
Volume = 896 m³
 LCB = 2.90 %
 KM = 2.44 m



Lpp =107.900 m
Bmld = 18.593 m
Tmld = 4.145 m

Cb =0.588
Cm =0.947
Cp =0.622

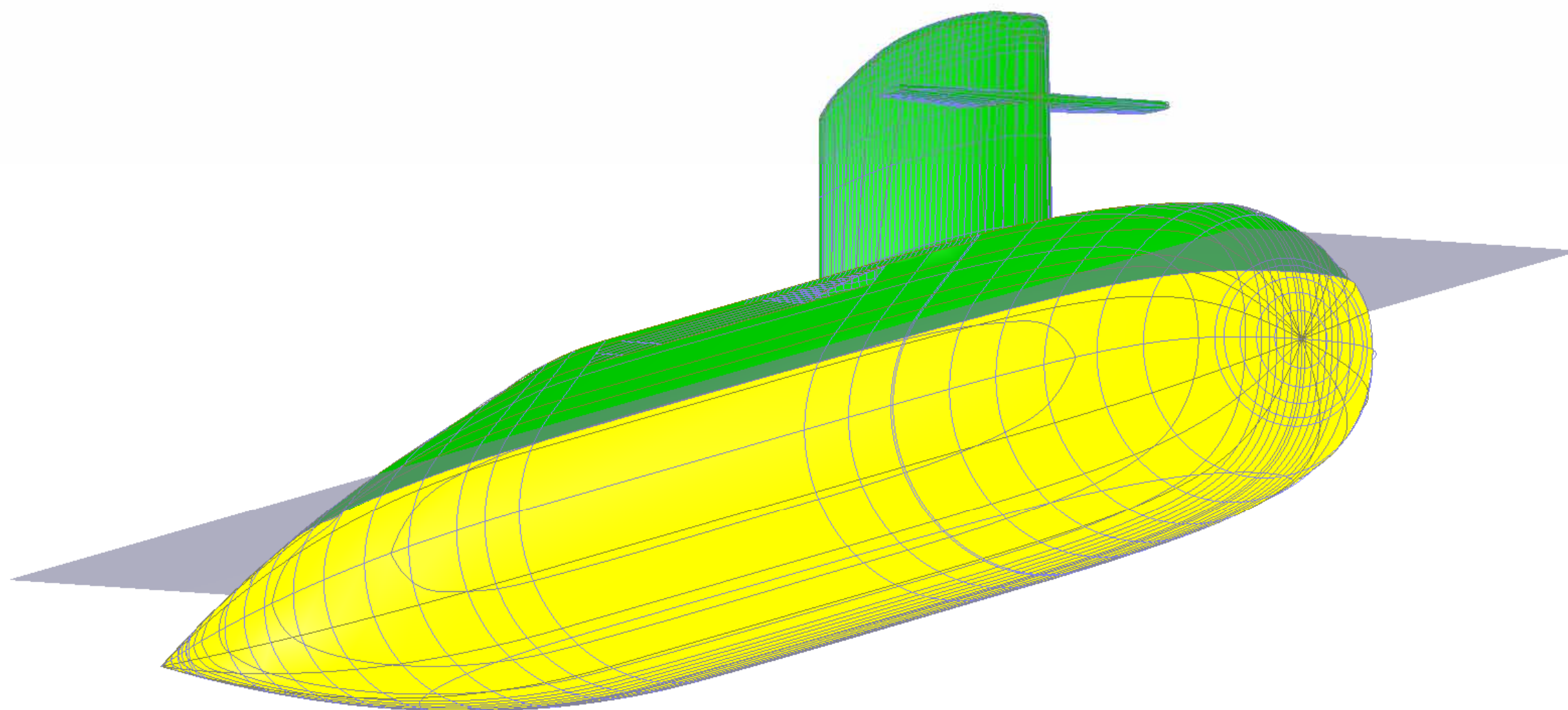
Volume = 4893 m^3
LCB = -0.24 %
KM = 6.87 m

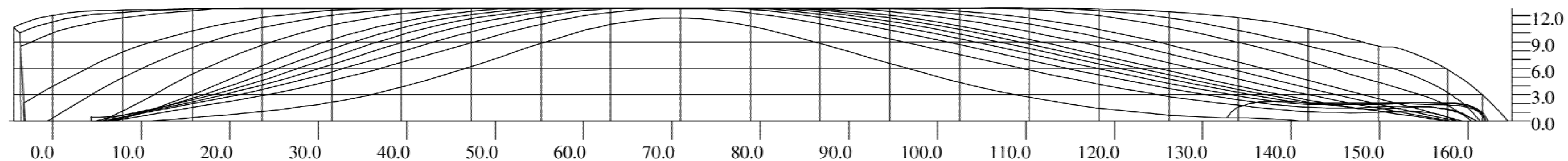
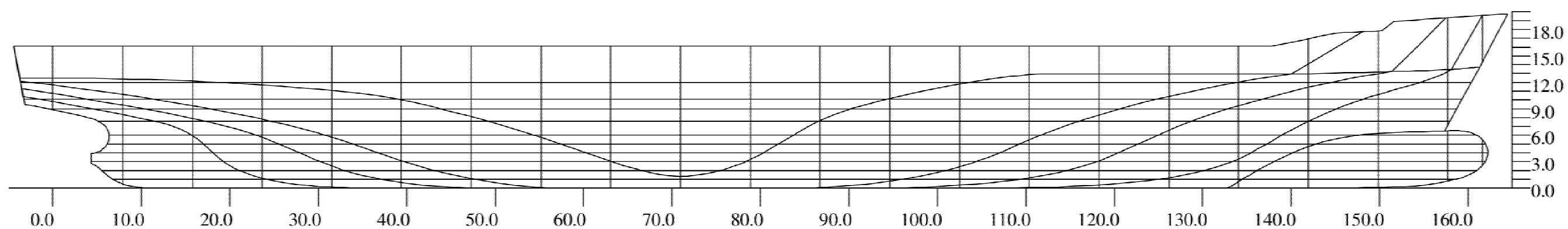
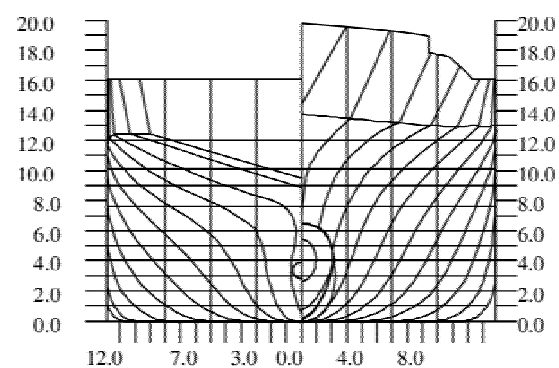


Lpp = 67.600 m
Bmld = 8.400 m
Tmld = 6.000 m

Cb =0.638
Cm =0.847
Cp =0.753

Volume = 2174 m^3
LCB = 7.64 %
KM = 0.75 m

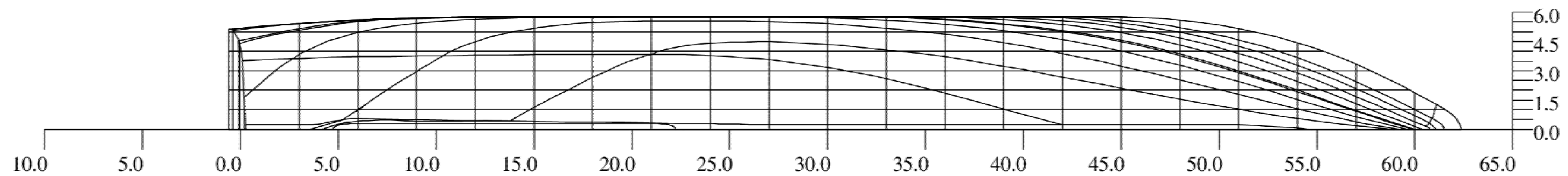
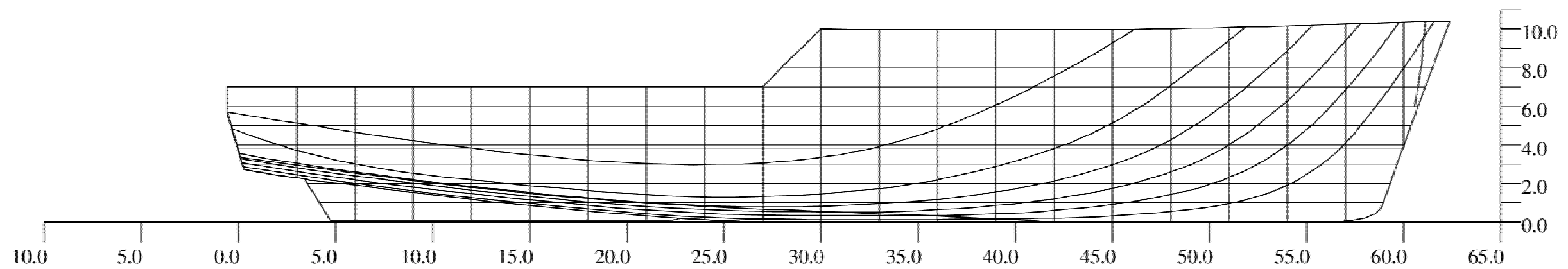
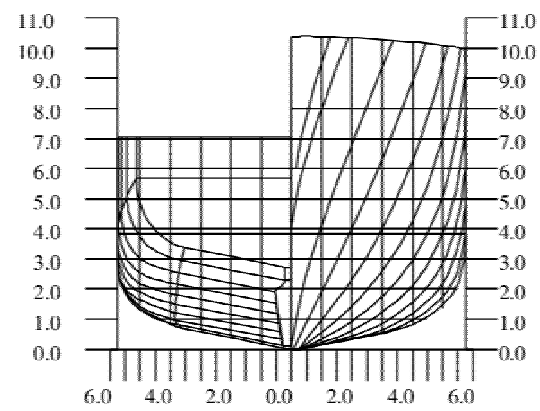




Lpp =157.700 m
Bmld = 25.700 m
Tmld = 7.600 m

Cb =0.560
Cm =0.996
Cp =0.562

Volume = 17260 m³
LCB = -1.82 %
KM = 6.75 m



Lpp = 57.600 m
Bmld = 11.500 m
Tmld = 3.850 m

Cb = 0.551
Cm = 0.824
Cp = 0.668

Volume = 1405 m³
LCB = -1.58 %
KM = 3.83 m

Zirfaea
SARC BV
Bussum, Holland
tel. 31 35 6915024