

LOCOPIAS: Re-designed user-interface

On a regular basis we inform you, as user of PIAS, by E-mail about news concerning PIAS and Fairway. However this time we discuss the latest edition of LOCOPIAS, which in this case contains aspects which are in your interest.

LOCOPIAS is our loading software for on-board use and originally derived from PIAS. LOCOPIAS has specific advantages in the field of the direct and accurate calculation method, a great number of calculation functions and a graphical container module which is prepared for all sizes of containers.

Over the years many functions have been added to LOCOPIAS, yet the basic structure has remained the same as the loading condition module of PIAS. However, in daily use, it is preferred to focus on a single loading condition, rather than on the list of loading conditions, as currently implemented in PIAS.

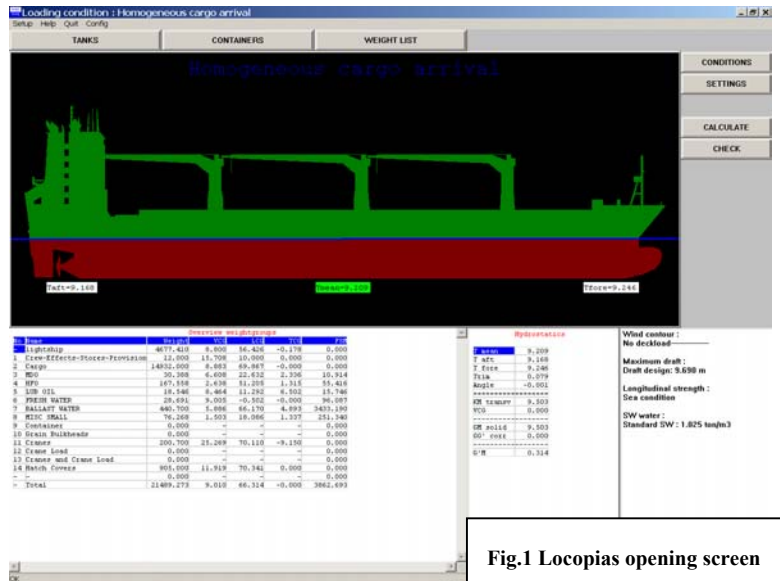


Fig.1 Locopias opening screen

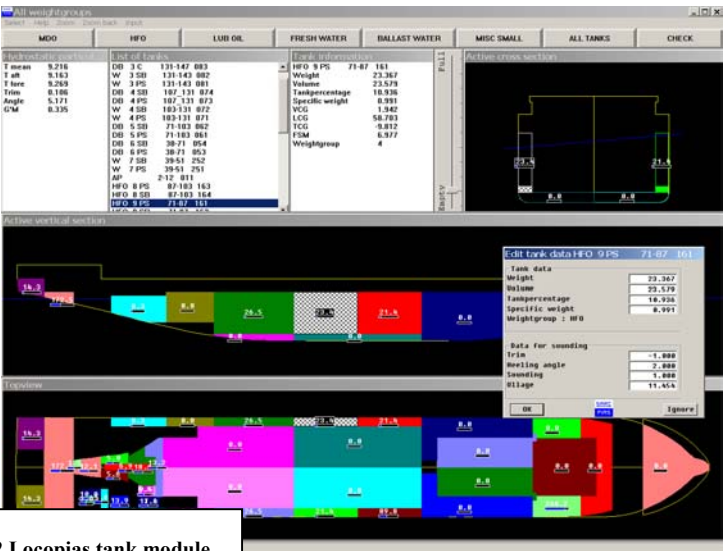


Fig.2 Locopias tank module

Furthermore, as we normally deal with one specific type of loading (e.g. tanks, containers, RoRo), it seems logical to be able to select the type of loading centrally in the program.

We have implemented this setup in a partially rewritten LOCOPIAS module, which is of course also equipped with many supporting functions, such as the maintenance of a list of historical loading conditions, simple switching between different types of loading and the interfacing with a tank gauging system.

Where possible information is presented graphical. The screen dumps on these pages show some examples. The calculation core is unaltered so the calculation results remain compatible with the previous versions of LOCOPIAS, and with PIAS.

The fact that we inform the users of PIAS on this matter does have a number of reasons:

- LOCOPIAS is often installed on vessels which are modeled with PIAS. Therefore LOCOPIAS can become a subject of discussion in combination with PIAS.
- Internally LOCOPIAS and the loading condition module of PIAS remain identical. This implies that users of

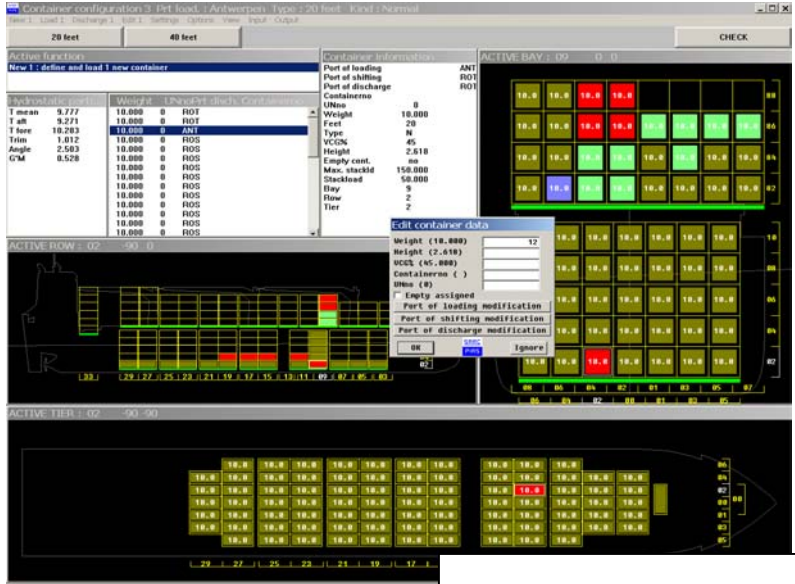


Fig.3 Locopias container module

PIAS, will be able to use the new interface.

- For the new LOCOPIAS interface new tools for graphical presentation have been developed. In the near future these tools will also be implemented in PIAS. The interface-intensive modules, like the compartment module or Fairway, will be updated first.

Fig.4 Locopias 3D output of ship situation

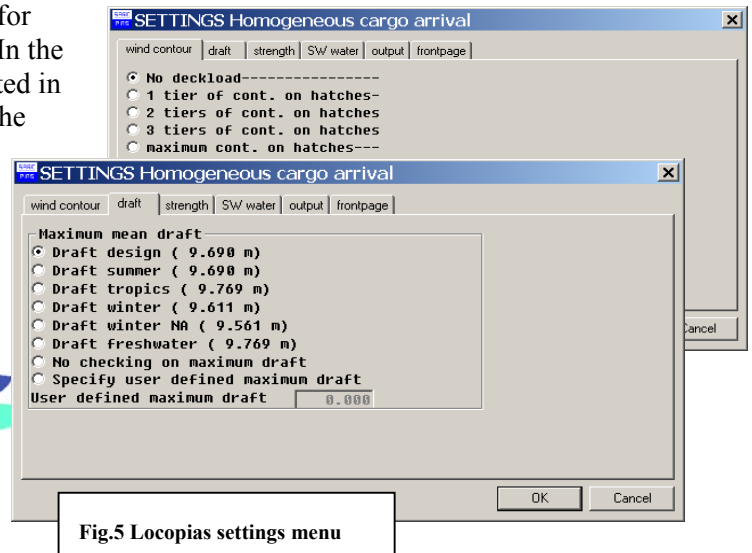
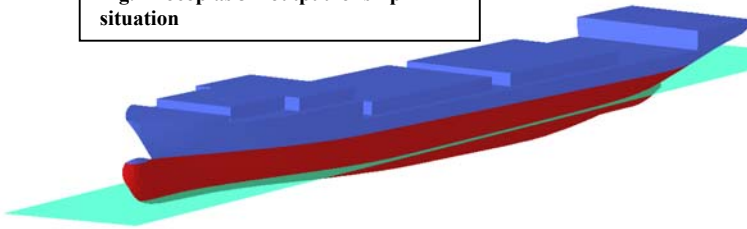


Fig.5 Locopias settings menu

Currently, the new software is being tested thoroughly and is expected to be deliverable in July 2005. At that time also an interactive, electronic tutorial on LOCOPIAS will be available.